

PRODUCT DESCRIPTION

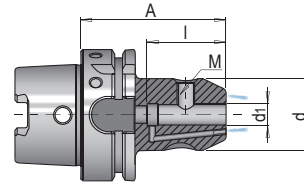
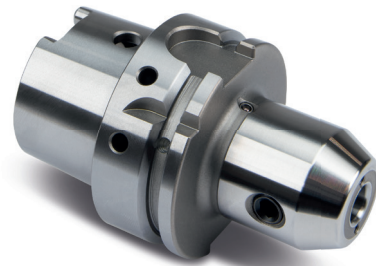
- » Optimal running smoothness due to hard turned shanks
- » Hard reworked puller grooves, HSK shoulder and HSK ejection surface
- » Ideal for the use of tools without internal coolant supply and machining in inconvenient spots with poor chip removal
- » Resealable cooling channels
- » With Balluff chip hole

APPLICATION

- » For clamping tools with cylindrical shank according to DIN 1835 type B and DIN 6359 type HB

INCLUDED IN THE DELIVERY

- » Includes clamping screw



I	M	d	Interface	d1	A	No.	EUR
35	M6	25	HSK-A 63	6	65	HWZ 1102/HSK-A 63/ 6/ 65	<>
35	M6	25	HSK-A 63	6	120	HWZ 1102/HSK-A 63/ 6/120	<>
35	M8	28	HSK-A 63	8	65	HWZ 1102/HSK-A 63/ 8/ 65	<>
35	M8	28	HSK-A 63	8	120	HWZ 1102/HSK-A 63/ 8/120	<>
41	M10	35	HSK-A 63	10	65	HWZ 1102/HSK-A 63/10/ 65	<>
41	M10	35	HSK-A 63	10	120	HWZ 1102/HSK-A 63/10/120	<>
48	M12	42	HSK-A 63	12	80	HWZ 1102/HSK-A 63/12/ 80	<>
48	M12	42	HSK-A 63	12	120	HWZ 1102/HSK-A 63/12/120	<>
51	M14	48	HSK-A 63	16	80	HWZ 1102/HSK-A 63/16/ 80	<>
51	M14	48	HSK-A 63	16	120	HWZ 1102/HSK-A 63/16/120	<>
53	M16	53	HSK-A 63	20	80	HWZ 1102/HSK-A 63/20/ 80	<>