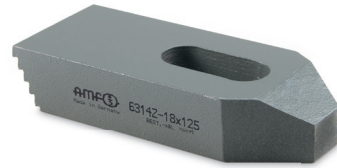
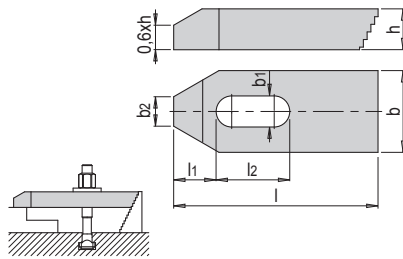


PRODUCT DESCRIPTION

- » Only compatible with HWS 140
Toothed clamping blocks
- » Wider groove spacing or greater clamping depths on the workpiece are possible through long versions

MATERIAL

- » Tempered steel, lacquered



b	b2	h	l1	l2	M ¹⁾	b1	l	No.	EUR
40	14	20	21	40	M12, M14	14	100	HWS 114/14 /100	<>
40	14	20	21	90	M12, M14	14	160	HWS 114/14 /160	<>
50	18	25	26	45	M16, M18	18	125	HWS 114/18 /125	<>
50	18	25	26	110	M16, M18	18	200	HWS 114/18 /200	<>
60	22	30	30	60	M20, M22	22	160	HWS 114/22 /160	<>

1) M: Suitable for clamping screw