

### PRODUCT DESCRIPTION

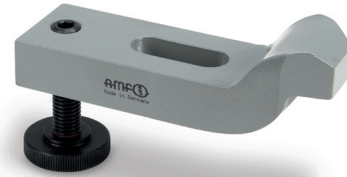
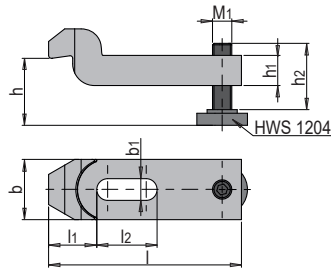
- » Continuous adjustment of the clamping height by means of support screw

### MATERIAL

- » Tempered steel, lacquered

### INCLUDED IN THE DELIVERY

- » Includes support screw



| b  | h     | h1 | l1   | l2 | M <sup>1)</sup> | M1  | h2 | b1 | l   | No.                | EUR |
|----|-------|----|------|----|-----------------|-----|----|----|-----|--------------------|-----|
| 30 | 22-51 | 15 | 36   | 32 | M10             | M10 | 39 | 11 | 100 | HWS 125/ 39/11/100 | < > |
| 40 | 28-65 | 20 | 44   | 40 | M12, M14        | M12 | 49 | 14 | 125 | HWS 125/ 49/14/125 | < > |
| 50 | 36-75 | 25 | 51.5 | 50 | M16, M18        | M16 | 55 | 18 | 160 | HWS 125/ 55/18/160 | < > |
| 60 | 43-92 | 30 | 59   | 70 | M20, M22        | M20 | 69 | 22 | 200 | HWS 125/ 69/22/200 | < > |

1) M: Suitable for clamping screw