

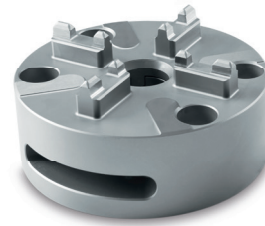
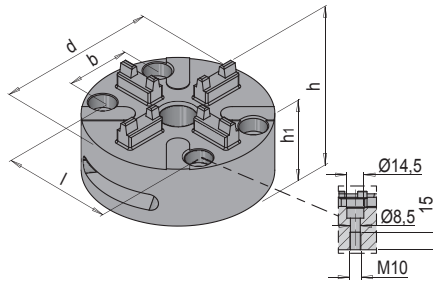


**PRODUKTBESCHREIBUNG**

- » Kompatibel zu ITS-50 und ITS-100
- » Mit Schnellspannfunktion
- » Inklusive Handspanner

**MATERIAL**

- » 1.2083



l	b	h	h1	d	Nr.	#CU#
70	40	49,6	36	100	HER 3030/100	XX,YY